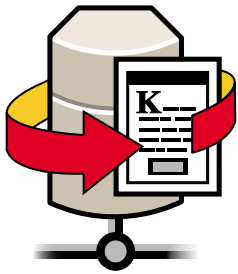




Streamline your Reference Archive workflow.



Reference Archive

The KODAK i9600 Series Application Software Kit makes the process of writing scanned or stored documents to Reference Archive Media more efficient and easier to manage.

The tools included in the i9600 Application Software Kit allow you to quickly and easily build your Reference Archive. The kit consists of Electronic Microimager Software, i9600 Application Software, and a Software Value Pack.

SECURE INCOMING INFORMATION ASSETS

If you scan documents and want trustworthy, long-lasting records, you need the Electronic Microimager Software. It is integrated with KODAK Capture Software to facilitate the collection and writing of batches created in centralized and distributed scanning environments.

ENHANCE YOUR ENTERPRISE CONTENT MANAGEMENT (ECM) SYSTEMS

The i9600 Application Software is optimized to manage a flow of documents from electronic storage media to writer output. Document pre-processing functions, output format rendering, and digital index creation performed in unattended mode all help maximize throughput. The third-party software available in the Software Value Pack supplements the

i9600 Application Software by providing file conversion and integration routines that support many popular file types and indexing schema managed by ECM systems.

IMPROVE ACCURACY AND PRODUCTIVITY

The i9600 Application Software Kit minimizes operator training and simplifies daily operations through a Windows-based interface and the numerous settings available to the system administrator. This enhances job integrity by moving higher-level decision making to the background of the process. Operators just select the type of job to be run. Selections such as scaling, asset location schemes, and reports are loaded automatically. Work proceeds without excessive data entry.

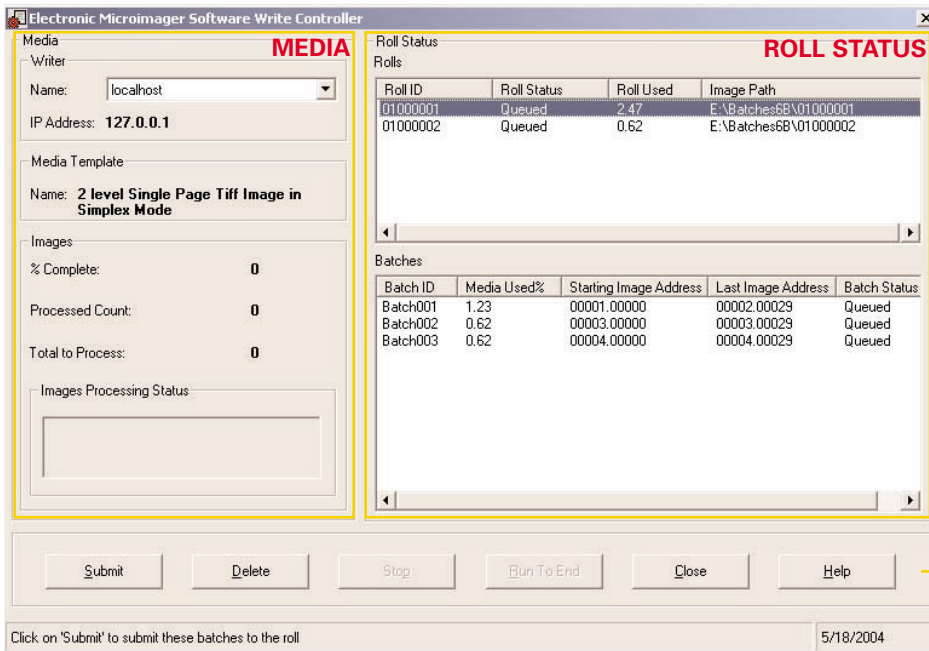
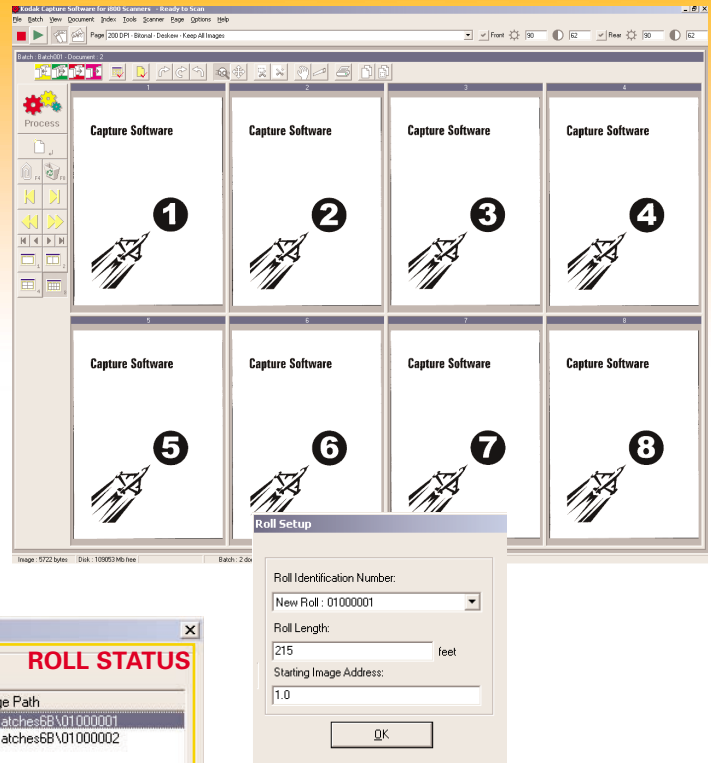


Now your operators can transfer records from virtually anywhere

KODAK ELECTRONIC MICROIMAGER SOFTWARE: THE FAST, CONVENIENT WAY TO WRITE DOCUMENTS SCANNED INTO KODAK CAPTURE SOFTWARE.

The Electronic Microimager Software included in the i9600 Software Kit is ideal for workflows in which you capture document images from paper originals. Working in concert with KODAK Capture Software, the Electronic Microimager Software allows operators to assign incoming batches of images to virtual volumes of media. As volumes become full they are written. Scanning can continue uninterrupted in the background.

The **KODAK Capture Software window** allows the operator to review incoming batches of images. Capture Software automatically optimizes image quality and maintains proper sort order.



Using the **Roll Setup window**, the operator associates each batch with a roll identification number, which serves as a virtual volume ID. This number and associated image record locators help ensure efficient and accurate retrievals when needed.

The **Write Controller window** of the Electronic Microimager Software consists of the three main areas highlighted in the illustration.

Media—lets the operator check on the status of the writer, the film output format, and the progress of processing.

Roll Status—lets the operator manage the job queue and administer batches within a given roll/virtual volume.

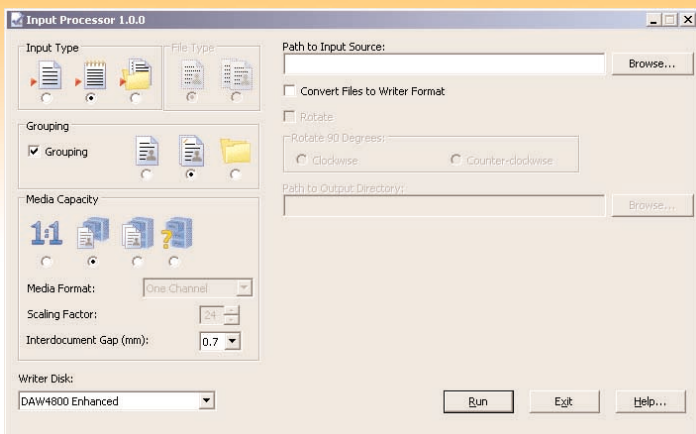
Control buttons—operators just click to submit jobs and control the media.

The Electronic Microimager Software stores jobs in cache until specifically directed to delete a job by the operator. At the completion of writing and verification, the images and the asset location information is available for the next processing step in the workflow.

Note how the logical presentation of information makes it easy for operators to manage and monitor job workflow at a glance—key for writing in unattended mode. The simple controls streamline actual operator tasks to minimize training and the possibility of errors.

ere in your Enterprise to your growing Reference Archive.

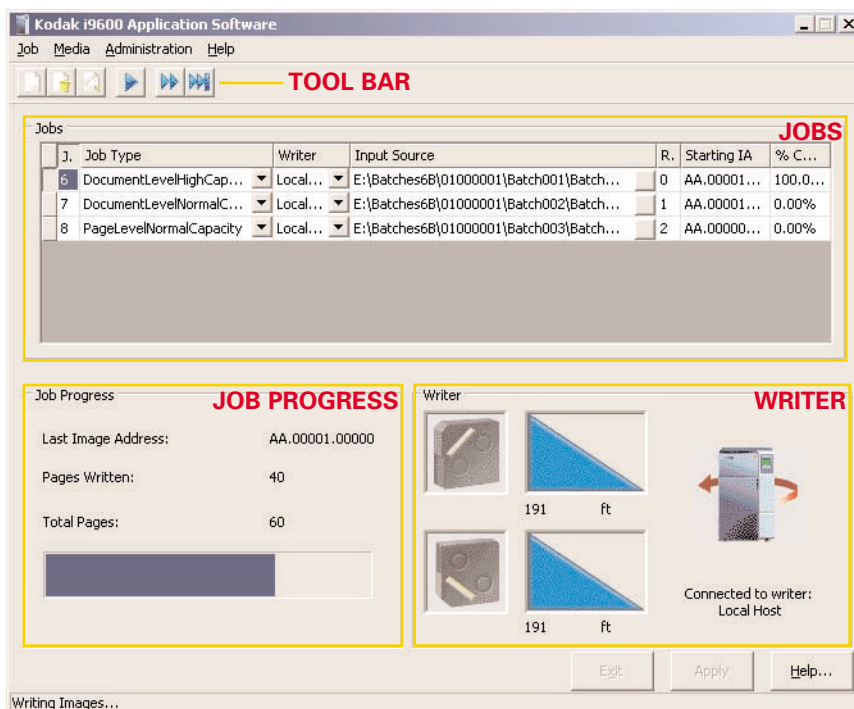
KODAK i9600 APPLICATION SOFTWARE: A FLEXIBLE ENVIRONMENT FOR WRITING DOCUMENTS STORED ON SERVERS OR REMOVABLE MEDIA.



The i9600 Application Software downloads documents from digital storage and adds them to your Reference Archive for safekeeping. It's highly customizable to support a variety of ECM systems. On the input side, the file conversion software included in the Software Value Pack simplifies integration to get writers into production without delay. On the output side, an available API provides an open environment for exporting custom defined indexing information.

The **Input Processor** software checks incoming images for writer compatibility and provides image processing functions to convert and optimize images for writing. To select documents, the operator browses to the media drive or server directory where the files reside.

If images and index information are supplied by the host system, the Input Processor can load and process them together. The Input Processor will automatically detect and identify exceptional documents requiring attention and also calculate media usage.



The **Application Software window** is used to manage the virtual volume queue and execute jobs once files have been loaded. After selecting a predefined job template and verifying media availability, the operator just clicks on the writer icon to start writing files out to Reference Archive media in the background in unattended mode.

The software can accept and process files in batch mode, or it can automatically build volumes in synch with ongoing processes in polling mode.

The Application Software screen is divided into the main areas highlighted in the illustration.

Tool Bar—icon buttons select commonly performed tasks.

Jobs—enables the operator to review, sort, and prioritize the writing jobs in the processing queue.

Job Progress—provides an update on writing so the operator can manage his or her own tasks according to when the Writer will require attention.

Writer—shows media availability and usage for added assurance that Reference Archive output is proceeding in the background.

Job ID	Job Type	Writer	Input Source	Pages Written	Total Pages	Roll ID	Starting IA	Last IA	Start Time	End Time	Status
6	Document...	Local Host	E:\Batches68...	60	60	0	AA.00001.0...	0000.00...	2004/May/...	2004/May/...	Complete
7	Document...	Local Host	E:\Batches68...	30	30	1	AA.00001.0...	0000.00...	2004/May/...	2004/May/...	Complete
8	PageLevel...	Local Host	E:\Batches68...	0	0	2	AA.000000001				New



The **Jobs window** provides access to job performance metrics and tracking information captured by the i9600 Application Software and stored in a jobs activity database. This enables them to audit process activity and check status of jobs against service level agreement targets. Jobs can be purged or loaded back into the Jobs queue as necessary. Information can also be transferred to your own monitoring and accounting systems.

Writing electronic images to the Reference Archive is a logical, step-by-step process with the i9600 Application Software. Job list presentation makes it easy to manage and monitor the workflow. And the software manages the creation and export of asset location information for ready integration of Reference Archive information with your Enterprise Content Management system.

CONTACT INFORMATION

- EASTMAN KODAK COMPANY Commercial Imaging , Rochester, NY 14650 1-800-944-6171
- KODAK CANADA, INC Toronto, Ontario M6M 1V3 1-800-465-6325
- KODAK GmbH Hedelfingerstr 60, 70327 Stuttgart, Germany EAMER-DI-Imagelink@kodak.com
- KODAK (AUSTRALASIA) PTY. LTD. North Ryde NSW 2113 Australia 61-2-9870-4224
- KODAK (HONG KONG) LIMITED North Point, Hong Kong 07021 852-2654-9330
- KODAK DE MEXICO Mariano Otero 408 Guadalajara, Mexico (52) (33) 3818-6598
- KODAK JAPAN LTD. 2-27-1 Shinkawa Chuo-ku, Tokyo 1040033 Japan jp-di-mktg@kodak.com

For other areas outside the U.S.A., call +1-585-722-9287

kodak.com/go/docimaging